



# Admiral Xtreme™

PTA BALLOON CATHETER OTW 0.035"

## Performance and Reliability You Can Count On

Product Code**	Balloon Diameter <sup>1</sup> (mm)	Balloon Length (mm)	Shaft Length (cm)	N° of Markers	Rated Burst Pressure <sup>2</sup> (atm)	Recommended Introducer Sheath (F)
ADM 030 020 080	3.0	20	80	2	14	5
ADM 030 020 130	3.0	20	130	2	14	5
ADM 030 040 080	3.0	40	80	2	14	5
ADM 030 040 130	3.0	40	130	2	14	5
ADM 030 080 080	3.0	80	80	2	14	5
ADM 030 080 130	3.0	80	130	2	14	5
ADM 030 120 080	3.0	120	80	2	14	5
ADM 030 120 130	3.0	120	130	2	14	5
ADM 040 020 080	4.0	20	80	2	14	5
ADM 040 020 130	4.0	20	130	2	14	5
ADM 040 040 080	4.0	40	80	2	14	5
ADM 040 040 130	4.0	40	130	2	14	5
ADM 040 060 080	4.0	60	80	2	14	5
ADM 040 060 130	4.0	60	130	2	14	5
ADM 040 080 080	4.0	80	80	2	14	5
ADM 040 080 130	4.0	80	130	2	14	5
ADM 040 120 080	4.0	120	80	2	14	5
ADM 040 120 130	4.0	120	130	2	14	5
ADM 050 020 080	5.0	20	80	2	14	5
ADM 050 020 130	5.0	20	130	2	14	5
ADM 050 040 080	5.0	40	80	2	14	5
ADM 050 040 130	5.0	40	130	2	14	5
ADM 050 060 080	5.0	60	80	2	14	5
ADM 050 060 130	5.0	60	130	2	14	5
ADM 050 080 080	5.0	80	80	2	14	5
ADM 050 080 130	5.0	80	130	2	14	5
ADM 050 120 080	5.0	120	80	2	14	5
ADM 050 120 130	5.0	120	130	2	14	5
ADM 060 020 080	6.0	20	80	2	14	5
ADM 060 020 130	6.0	20	130	2	14	5
ADM 060 040 080	6.0	40	80	2	14	5
ADM 060 040 130	6.0	40	130	2	14	5
ADM 060 060 080	6.0	60	80	2	14	5
ADM 060 060 130	6.0	60	130	2	14	5
ADM 060 080 080	6.0	80	80	2	14	5
ADM 060 080 130	6.0	80	130	2	14	5

Product Code**	Balloon Diameter <sup>1</sup> (mm)	Balloon Length (mm)	Shaft Length (cm)	N° of Markers	Rated Burst Pressure <sup>2</sup> (atm)	Recommended Introducer Sheath (F)
ADM 060 120 080	6.0	120	80	2	14	5
ADM 060 120 130	6.0	120	130	2	14	5
ADM 070 020 080	7.0	20	80	2	14	5
ADM 070 020 130	7.0	20	130	2	14	5
ADM 070 040 080	7.0	40	80	2	14	5
ADM 070 040 130	7.0	40	130	2	14	5
ADM 070 060 080	7.0	60	80	2	14	5
ADM 070 060 130	7.0	60	130	2	14	5
ADM 070 080 080	7.0	80	80	2	14	5
ADM 070 080 130	7.0	80	130	2	14	5
ADM 080 020 080	8.0	20	80	2	14	6
ADM 080 020 130	8.0	20	130	2	14	6
ADM 080 040 080	8.0	40	80	2	14	6
ADM 080 040 130	8.0	40	130	2	14	6
ADM 080 060 080	8.0	60	80	2	11	6
ADM 080 060 130	8.0	60	130	2	11	6
ADM 080 080 080	8.0	80	80	2	11	6
ADM 080 080 130	8.0	80	130	2	11	6
ADM 090 020 080	9.0	20	80	2	14	6
ADM 090 020 130	9.0	20	130	2	14	6
ADM 090 040 080	9.0	40	80	2	14	6
ADM 090 040 130	9.0	40	130	2	14	6
ADM 090 060 080	9.0	60	80	2	11	6
ADM 090 060 130	9.0	60	130	2	11	6
ADM 090 080 080	9.0	80	80	2	11	6
ADM 090 080 130	9.0	80	130	2	11	6
ADM 100 020 080	10.0	20	80	2	11	6
ADM 100 020 130	10.0	20	130	2	11	6
ADM 100 040 080	10.0	40	80	2	11	6
ADM 100 040 130	10.0	40	130	2	11	6
ADM 120 020 080	12.0	20	80	2	11	7
ADM 120 020 130	12.0	20	130	2	11	7
ADM 120 040 080	12.0	40	80	2	11	7
ADM 120 040 130	12.0	40	130	2	11	7

### COMPLIANCE CHART\*\*

(BALLOON LENGTH 20, 40, 60, 80 AND 120 MM)

Pressure (atm)	Balloon Diameter (mm) <sup>1</sup>									
	3.00	4.00	5.00	6.00	7.00	8.00*	9.00*	10.00	12.00	
6								10.00	12.00	
7	2.93	3.93	4.90	5.90	6.87	7.87	8.87	10.15	12.15	
8	3.00	4.00	5.00	6.00	7.00	8.00	9.00	10.30	12.30	
9	3.03	4.03	5.04	6.04	7.06	8.10	9.10	10.45	12.45	
10	3.06	4.06	5.08	6.08	7.12	8.20	9.20	10.60	12.60	
11	3.09	4.09	5.12	6.12	7.18	8.30	9.30	10.80	12.80	
12	3.12	4.12	5.16	6.16	7.24					
13	3.15	4.15	5.20	6.20	7.30					
14	3.18	4.18	5.25	6.25	7.36					

■ Nominal Pressure ■ Rated Burst Pressure<sup>2</sup> 1. In vitro results 2. Do not exceed RBP

\* 20 and 40 mm balloon length devices have burst pressure of 14 atm  
\*\* Note that Admiral Xtreme is also available in longer lengths up to 300 mm

#### Indications For Use

The Admiral Xtreme PTA Balloon Dilatation Catheter is intended to dilate stenoses in the iliac, femoral, ilio-femoral, popliteal, infra-popliteal, and renal arteries, and for the treatment of obstructive lesions of native or synthetic arteriovenous dialysis fistulae.

**Warning:** Prior to use, refer to the *Instructions for Use* supplied with these devices for indications, contraindications, side effects, suggested procedure, warnings and precautions.

**Warning:** Do not exceed the rated burst pressure. The rated burst pressure is based on the results of in-vitro testing. At least 99.9% of the balloons (with a 95% confidence) will not burst at or below their rated burst pressure. Use of a pressure-monitoring device is recommended to prevent overpressurization.

**Caution:** Larger models may exhibit slower deflation times particularly on long catheter shafts.

### TECHNICAL SPECIFICATIONS

Catheter design	Over the Wire (OTW)
Balloon material	FLEXITEC Xtreme
Coating	LFC hydrophilic coating, shaft and balloon (shaft and balloon shoulders only for balloon lengths 20 and 40 mm)
Shaft diameter	5F-6F
Marker	2 Swaged (zero profile) platinum iridium
Max. recom. guidewire	0.035"

1 French (F) = 0.333 mm  
1 inch (") = 25.4 mm

#### Potential Adverse Events

Possible adverse events associated with use of the Admiral Xtreme PTA Balloon Dilatation Catheter include, but are not limited to, complications related to puncture such as, but not limited to, local hematoma, infection and hemorrhage. Dilatation related complications including, but not limited to, dissection, perforation and restenosis. Angiography related complications such as, but not limited to, hypotension, drug/allergic reactions and death.

**Caution:** Federal (USA) law restricts this product for sale by or on the order of a physician.

#### R<sub>only</sub>

Test Data is on file at Medtronic. Bench Test results may not be indicative of clinical performance.

Admiral Xtreme™ and Flexitec® are trademarks of Invatec S.p.A.

UC201105952a EN © Medtronic, Inc. 2012. All Rights Reserved. Printed in the USA. For distribution in the USA only. 04/12

► [www.medtronic.com](http://www.medtronic.com)

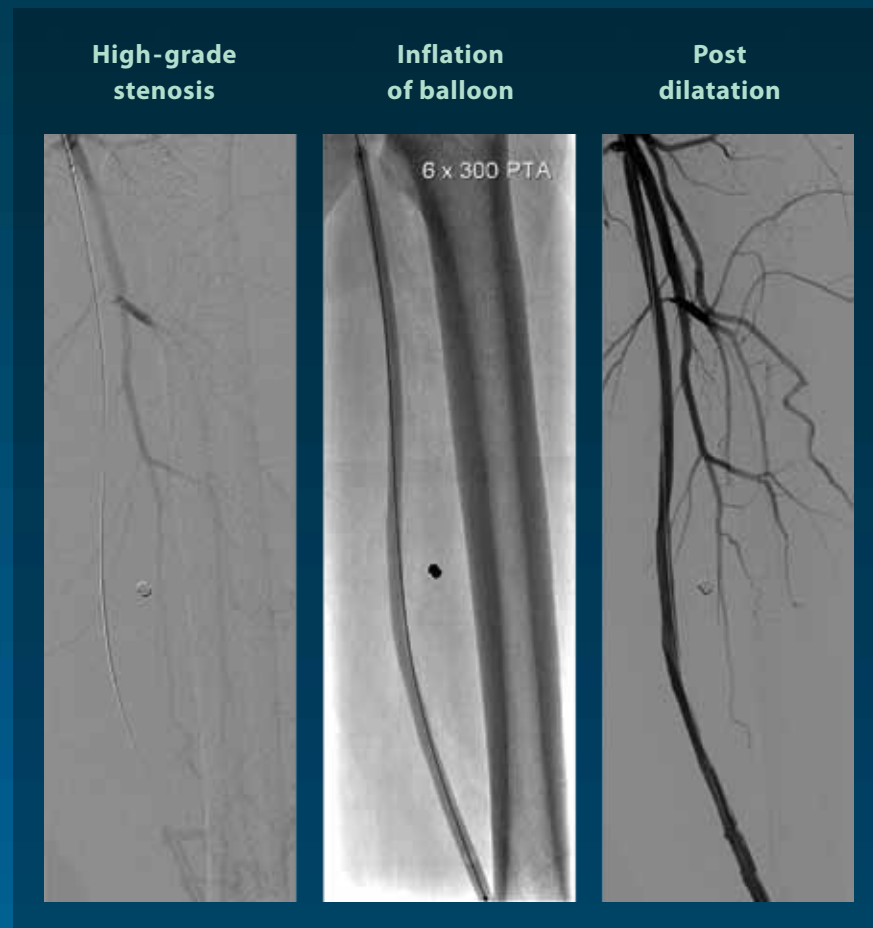
Medtronic Vascular, Inc.  
3576 Unocal Place  
Santa Rosa, CA 95403  
USA

Product Services  
Support Center  
Tel: 888.283.7868  
Fax: 800.838.3103

CardioVascular LifeLine  
Customer Support  
Tel: 877.526.7890  
Tel: 763.526.7890



**DEPEND ON ADMIRAL XTREME™  
WHEN EXTREME CONDITIONS  
REQUIRE SOLID PERFORMANCE  
AND RELIABILITY**



High-grade stenosis of the superficial femoral artery treated by a single inflation of a 6 mm x 300 mm Admiral Xtreme balloon.  
Images courtesy of Dr. Robert J. Feezor, University of Florida, Gainesville, Florida.



**6-folding**



**Dual lumen design**

**FLEXITEC® XTREME ADVANCED BALLOON TECHNOLOGY**

- Provides low compliance while maintaining flexibility, strength and durability

**6-FOLDING BALLOON TECHNOLOGY ALLOWS FOR CONSISTENT LOW-PROFILE WRAP\***

**HYDROPHILIC COATING IMPROVES CROSSABILITY**

- On shaft and balloons of lengths 60–300 mm
- Bikini coating on shaft and balloon shoulders of balloon lengths 20 and 40 mm

**SHAFT MATERIAL AND DUAL LUMEN DESIGN**

- Pushability and kink resistance combined with flexibility
- Large inflation lumen for rapid inflation/deflation

**WIDE RANGE OF BALLOON LENGTHS (FROM 20–300 MM) AND DIAMETERS (FROM 3.0–12.0 MM)**

\* 6-fold design availability depends on balloon sizes